



Universal Intelligent Node for Street Lights

CityIQ: Transform lighting network into digital infrastructure

These intelligent nodes can see, hear and feel the heartbeat of a city. The node connects city officials and citizens to real-time data, allowing for endless applications. From optimized parking and traffic to enhanced public safety and environmental monitoring, this IoT platform can improve the quality of life in your city, today and tomorrow. CityIQ's aesthetics offer seamless integration into all streetscapes by attaching to any light pole and providing power to any light fixture.



HORIZONTAL NODE: FOR AREA OR ROADWAY LIGHT POLES

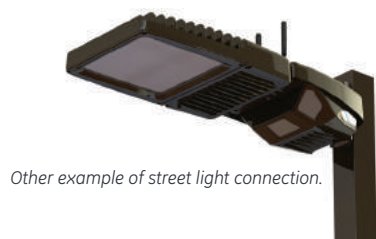
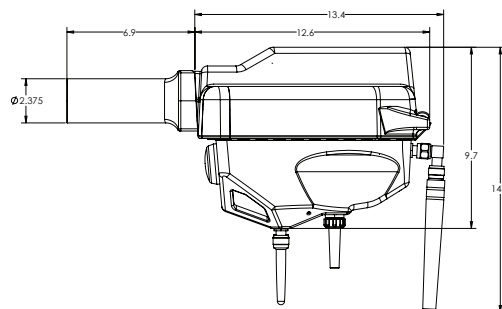
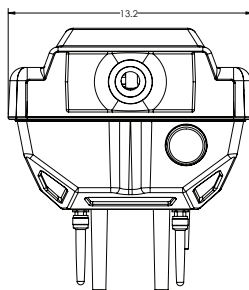
MECHANICAL

Max Weight: 30 lbs (not including the arm bracket or light fixture)
Ingress Protection: IP65 lower housing compartment

Max Weight of the Luminaire: 30 lbs
Luminaire Mounting: 1.66" to 2" slipfitter arm
EPA: 0.97 ft² (0.09 m²)

DIMENSIONAL DRAWING

Note: All dimensions are in inches (not including fixture mount bracket)



Other example of street light connection.

Preliminary – Subject to Change



UNIVERSAL INTELLIGENT NODE SPECIFICATIONS

ELECTRICAL

Input/Output Voltage: **120 – 277V and 480V**
 Frequency: **50/60 Hz**
 Max Power: **<30W (excluding auxiliary devices connected to PoE port)**
 Minimum Surge Withstand Capability: **20kV**
 Average Power: **25W**
 Metering: **Utility-grade energy meter**

TEMPERATURE

Operating Range: **-40 C to +40 C**

COMMUNICATIONS

- Node to Access Point: Wi-Fi: 802.11 a/b/g/n
- Cellular LTE
- Ethernet

PLATFORM

Scalable: **Endless metadata streams available**
 Cybersecurity: **AES Encryption and Certificate-Based Authentication**
 Open: **Supports third-party app development using APIs**

CAMERAS

Color Cameras:
 Resolution: **1080p (1080x1960) per camera**
 Quantity: **up to 3 colors**

Machine Analytics Cameras:
 Resolution: **QVGA+**

REGULATION

- cUL
- FCC

EXTERNAL SENSORS COMMUNICATION

- Wi-Fi
- Bluetooth
- BLE
- PoE

ENVIRONMENTAL SENSORS

- Temperature
- Pressure
- Lightning
- Compass
- Humidity
- Vibration
- Noise/Acoustic
- Camera

STORAGE

Local Hard Drive: **512GB SSD**

EXPANSION PORTS:

Power: **Power over Ethernet**

MAINTENANCE AND UPGRADES

Maintenance Service: **Available**
 Software Upgrades: **Over the air**

INTENDED APPLICATIONS

- Parking Optimization
- Monitoring & Surveillance
- Traffic Optimization
- Environmental Monitoring
- Public Safety
- Pedestrian Planning & Safety
- Gunshot Detection

Contact GE for a list of premier partner applications.

OTHER

- No externally visible cameras
- No externally visible wiring for power or controls
- Ability to remotely adjust camera orientation
- Camera field-of-view protection for cold temperatures
- Public Wi-Fi: Contact GE for public Wi-Fi expansion capabilities

Preliminary – Subject to Change



Universal Intelligent Node for Street Lights

CityIQ: Transform lighting network into digital infrastructure

These intelligent nodes can see, hear and feel the heartbeat of a city. The node connects city officials and citizens to real-time data, allowing for endless applications. From optimized parking and traffic to enhanced public safety and environmental monitoring, this IoT platform can improve the quality of life in your city, today and tomorrow. CityIQ's aesthetics offer seamless integration into all streetscapes by attaching to any light pole and providing power to any light fixture.



VERTICAL NODE: FOR DECORATIVE POST TOP OR TEAR DROP LIGHT POLES

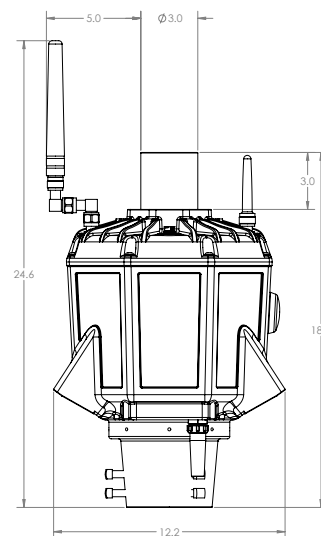
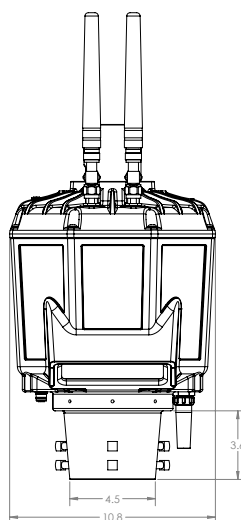
MECHANICAL

Max Weight: 35 lbs
Ingress Protection: IP65

Max Weight of the Luminaire: 35 lbs
Luminaire Mounting: 3" diameter x 3" long tenon (76mm x 76mm)
EPA: 0.933 ft² (0.087 m²)

DIMENSIONAL DRAWING

Note: All dimensions are in inches



Other examples of decorative street light connection

Preliminary – Subject to Change



UNIVERSAL INTELLIGENT NODE SPECIFICATIONS

ELECTRICAL

Input/Output Voltage: **120 – 277V and 480V**
Frequency: **50/60 Hz**
Max Power: **<30W (excluding auxiliary devices connected to PoE port)**
Minimum Surge Withstand Capability: **20kV**
Average Power: **25W**
Metering: **Utility-grade energy meter**

TEMPERATURE

Operating Range: **-40 C to +40 C**

COMMUNICATIONS

- Node to Access Point: **Wi-Fi: 802.11 a/b/g/n**
- Cellular **LTE**
- Ethernet

PLATFORM

Scalable: **Endless metadata streams available**
Cybersecurity: **AES Encryption and Certificate-Based Authentication**
Open: **Supports third-party app development using APIs**

CAMERAS

Color Cameras:
Resolution: **1080p (1080x1960) per camera**
Quantity: **up to 3 colors**

Machine Analytics Cameras:
Resolution: **QVGA+**

REGULATION

- cUL
- FCC

EXTERNAL SENSORS COMMUNICATION

- Wi-Fi
- Bluetooth
- BLE
- PoE

ENVIRONMENTAL SENSORS

- Temperature
- Pressure
- Lightning
- Compass
- Humidity
- Vibration
- Noise/Acoustic
- Camera

STORAGE

Local Hard Drive: **512GB SSD**

EXPANSION PORTS:

Power: **Power over Ethernet**

MAINTENANCE AND UPGRADES

Maintenance Service: **Available**
Software Upgrades: **Over the air**

INTENDED APPLICATIONS

- Parking Optimization
- Monitoring & Surveillance
- Traffic Optimization
- Environmental Monitoring
- Public Safety
- Pedestrian Planning & Safety
- Gunshot Detection

Contact GE for a list of premier partner applications.

OTHER

- No externally visible cameras
- No externally visible wiring for power or controls
- Ability to remotely adjust camera orientation
- Camera field-of-view protection for cold temperatures
- Public Wi-Fi: Contact GE for public Wi-Fi expansion capabilities

Preliminary – Subject to Change